

The Thompson - 3C

Exterior | 1,493 sq.ft.



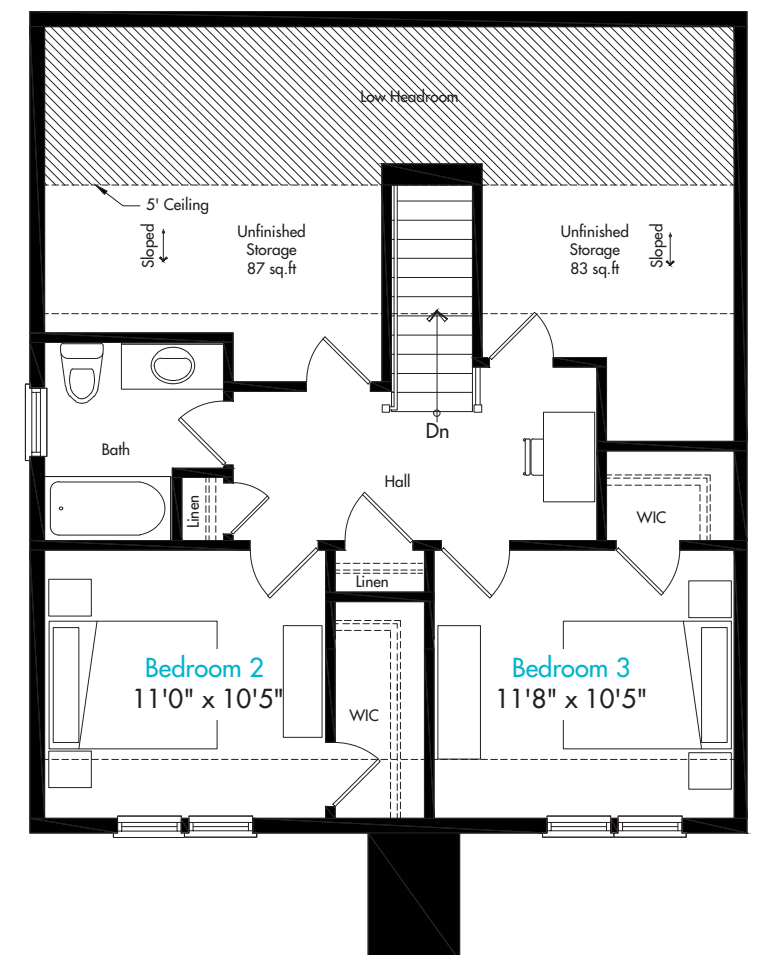
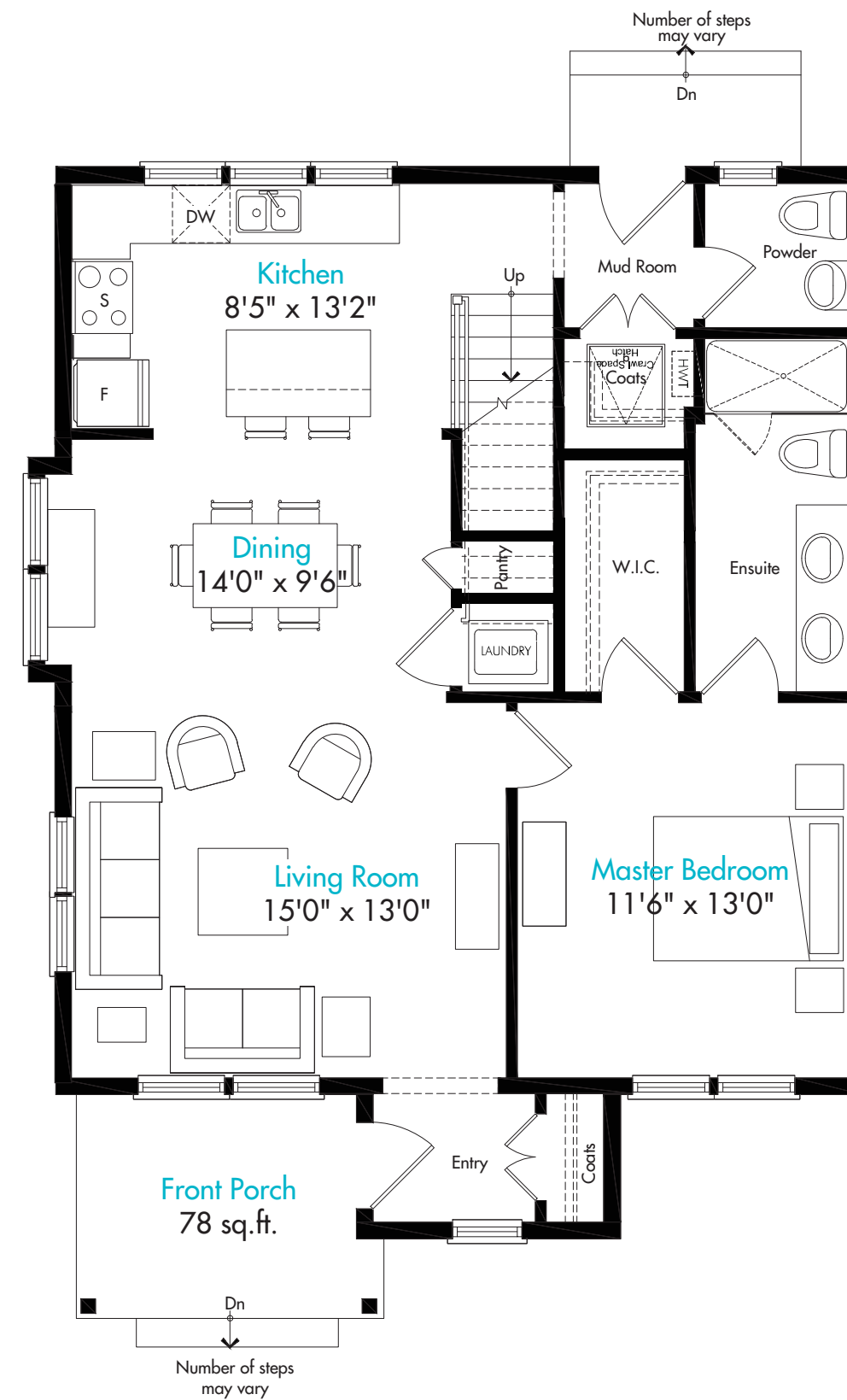
- 3 Bedrooms
- 2½ Bathrooms
- Main Floor Master
- Loads of Storage Space
- Mud Room
- 2nd Floor Laundry Room

This sunny full-size home is a corner unit that is ideal for entertaining. The kitchen features a full size breakfast island that extends the kitchen's prep space and offers a convenient place for casual dining or gathering with friends and family. You'll love gazing out the window to the rear yard as you stand at the kitchen sink. The home features a large master bedroom, located on the main floor. There's a spacious walk-in closet and ensuite bathroom with twin sinks and large step in shower. The second floor has two bedrooms and a bathroom as well as plenty of storage space



THOMPSON
EXTERIOR

THOMPSON
EXTERIOR



The Thompson - 3C

Interior | 1,482 sq.ft.



- 3 Bedrooms
- Main Floor Master
- 2½ Bathrooms
- Loads of Storage Space
- Mud Room
- 2nd Floor Laundry Room

This sunny full-size home is ideal for entertaining. You'll love gazing out the window to the rear yard as you stand at your kitchen sink. The kitchen also features a full size breakfast island that extends the kitchen's prep space and offers a convenient place for casual dining or gathering with friends and family. The large master bedroom, located on the main floor features a walk-in closet and ensuite bathroom with twin sinks and large step in shower. The second floor has two bedrooms and a bathroom as well as plenty of storage space.



JOHNSTON
EXTERIOR

THOMPSON
INTERIOR

THOMPSON
INTERIOR

JOHNSTON
EXTERIOR

