

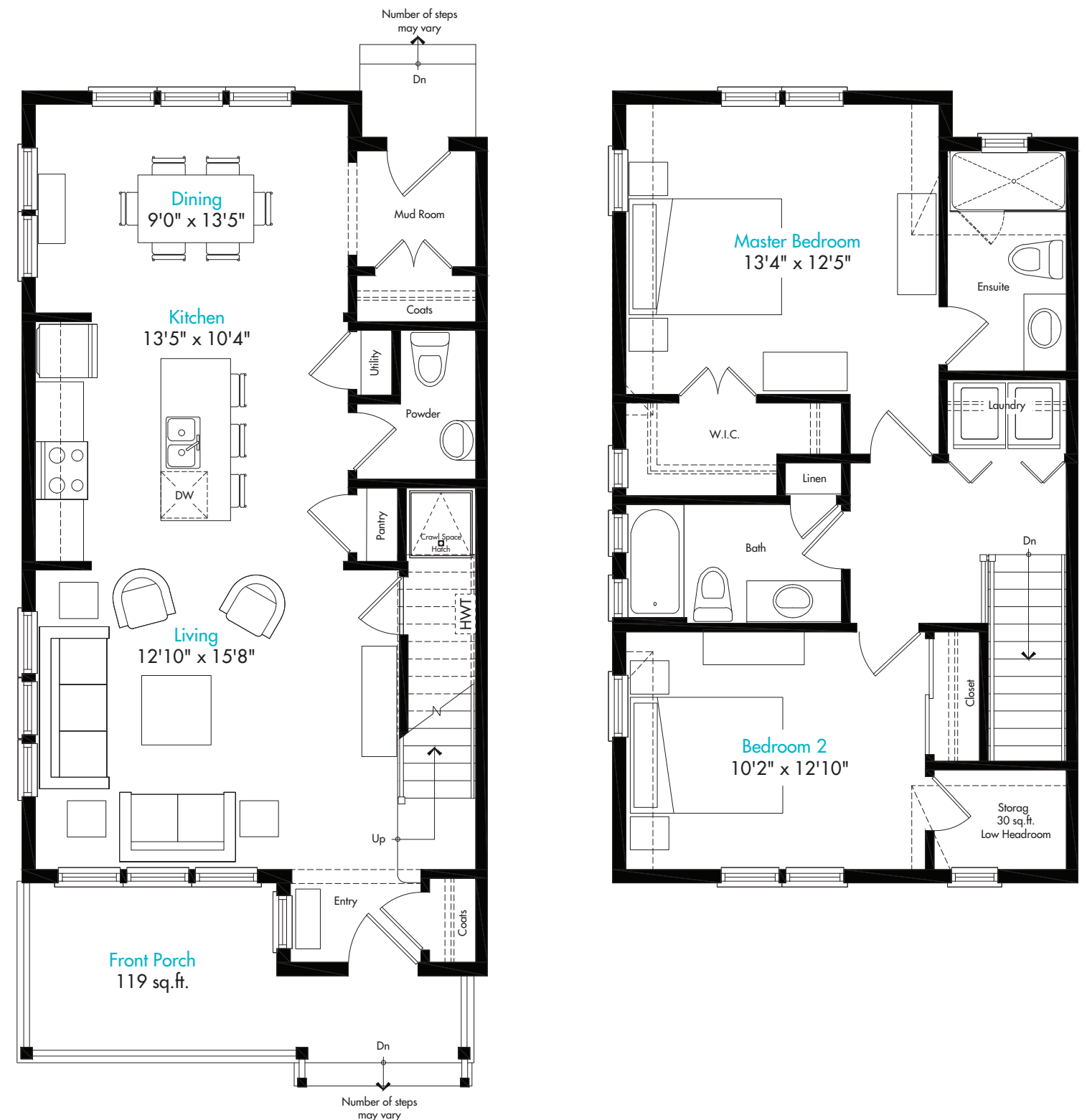
The MacDonald - 2B

Exterior | 1,357 sq.ft.



- 2 Bedrooms
- 2 ½ Bathrooms
- 2 Storey
- Open Concept
- Main Floor Living

A welcoming front porch leads to a bright, open living space with a stylish kitchen flanked by the living room on one side and the dining room on the other. You'll appreciate the central working breakfast bar that has twin sinks, dishwasher and lots of extra prep space. The convenient pantry and separate closet add even more functionality to the plan, giving you plenty of storage space. You'll love the privacy of the second floor master bedroom with walk-in closet and ensuite bathroom with step-in shower. Plus the second bedroom and bathroom is ideal for family and guests! This home also features a convenient linen closet and spacious storage closet as well as side-by-side laundry.



MACDONALD
EXTERIOR

CARMICHAEL
INTERIOR

CARMICHAEL
INTERIOR

JOHNSTON
EXTERIOR